

APEL Extrusions Limited

Aluminum Extrusion Manufacturing



Images courtesy of APEL Extrusions Limited, Inc.

APEL EXTRUSIONS LIMITED is a full-service extrusion manufacturer that specializes in aluminum extrusion and finishing. APEL was founded in 1972 in Calgary, Alberta, Canada and since has expanded its presence to Coburg, Oregon. With its headquarters and production facility in Alberta, and factory in Oregon, APEL services both western Canada as well as the western United States.

APEL takes pride in being one of the very few full-service extrusion shops in North America. APEL provides all services under one roof in order to maintain its customer focused organization. The aluminum extrusions that APEL manufactures can be used in a number of applications such as, residential and commercial construction, HVAC systems, recreational vehicles, consumer goods and more.

The aluminum extrusion industry is seeing an increase in demand for flat rolled and extruded aluminum products like never before. This is due primarily to the transportation sector. This trend is expected to continue through 2020, with a majority of the demand in North America coming from the automotive industry. With the increased demand for aluminum extruded products, companies like APEL are expected to adapt to the wants and needs of customers while continuing to provide quality solutions that exceed extremely tight tolerances. For APEL, a critical step in being able to provide a high-quality product for its customers comes long before the actual extrusion process begins.

“Based on the simulations that we ran in **Click2Extrude**, we were able to determine the end result without having to spend **thousands of dollars** on billets and press time for the actual trials.”



INDUSTRY

Aluminum Extrusion Manufacturing

CHALLENGE

Testing die extrusion performance while limiting time and cost

SOLUTION

Employing the extrusion simulation software, solidThinking Click2Extrude to simulate the extrusion process prior to production.

RESULTS

- Performed numerous simulations within one week
- Saved thousands of dollars in materials, machinery and trials
- Increased accuracy in quoting potential projects

SOLIDTHINKING CLICK2EXTRUDE IN THE EXTRUSION SIMULATION PROCESS

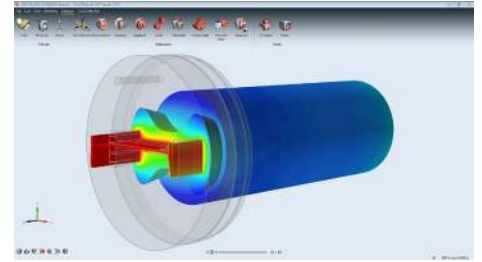
APEL puts a high value on designing business solutions that meet its customers' needs. With this objective in mind, the company believes that extensive research is a crucial part in its overall extrusion process. APEL dedicates many resources including both time and money on scientific research, instrumental development and die performance research. "The problem in conducting and executing research in die performance is having to buy new tooling, prep the material and press, and run the test, all with the possibility of the extrusion failing," explains Tony DaSilva, Vice President, Operations of APEL Extrusions. By utilizing solidThinking Click2Extrude, APEL was able to run numerous simulations in a short period of time to better determine the outcome of specific die designs.

"Click2Extrude has the ability to give a better perspective of the final outcome of the design and extrusion process without having to run costly trials."

When running the actual extrusion process for testing purposes, a number of factors are considered such as, multiple die parameters, weld types, quality of the weld, and how that weld can compromise the quality of the die surface. Click2Extrude is able to detect any of these visible or invisible defects during the simulation. DaSilva notes, "Based on the simulations that we run in Click2Extrude, we are able to determine whether the end goal is achievable with the current process and design. Thanks to the indication and results from the software, we are able to save thousands of dollars within just one week by avoiding costly tooling, materials and trials."

WHAT'S NEXT?

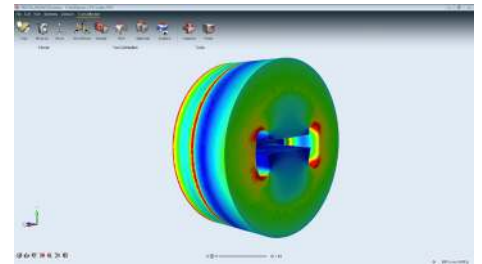
APEL continues to explore the extrusion simulation based environment of Click2Extrude while running simulations, evaluating die strengths and weaknesses as well as learning how to better use the software within their processes. The Extrude Process Tool is another valuable feature within Click2Extrude that APEL hopes to employ in order to more accurately quote future projects.



Flow Simulation Showing Temperature Contour and Nose Cone



APEL Extrusions Limited Extrusion Press



Tool Deformation Analysis Showing Critical Regions

ABOUT APEL

Founded in 1972, APEL is a full-service extrusion manufacturer serving markets in western Canada and the western United States. With 40+ years of experience, APEL is a modern North American extrusion company that has made a commitment to continued on-going investment in new equipment and capabilities to meet the current and future demands of the markets it serves. APEL's quality system meets ISO 9001 – 2008 requirements.

APEL Extrusions Limited
7929 – 30th Street S.E.
Calgary, AB T2C 1H7, Canada
www.apelextrusions.com



 solidThinking.com

 forum.solidthinking.com
 youtube.com/solidthinking

 facebook.com/solidThinking
 twitter.com/solidThinking